

IBM® Lotus Notes® and Domino® 8.5 Reviewer's Guide

December 2008

© Copyright International Business Machines Corporation 2008. All rights reserved.

With Lotus® Notes® and Domino® 8.5, world-class business e-mail and collaboration take another exciting step forward, offering new approaches to enhance efficiency and creativity, while extending the value of current investments.

This white paper guides you through the newly released, innovative, and open features of Notes and Domino 8.5. It is a must-read for any existing or potential user of Lotus Notes and Domino, from the casual user to the administrator or application developer to the line-of-business executive.

Contents

1	What's new in the Lotus Notes 8.5 client	3
1.1	General	3
1.1.1	Streamlined context menus	3
1.1.2	Drag and drop in Notes documents	3
1.1.3	Compress inline images	4
1.2	Mail	4
1.2.1	Type-ahead address options include multiple email addresses	4
1.2.2	Folder column in mail All Documents view	5
1.3	Calendar	5
1.3.1	Adding an iCalendar feed to your Notes calendar	5
1.3.2	Adding Notes TeamRoom calendar entries to your Notes calendar	5
1.3.3	Adding a public Google calendar's entries to your Notes calendar	6
1.3.4	Horizontal scroll bar for calendar views	6
1.4	Contacts	6
1.4.1	Forward contacts as a vCard	6
1.4.2	Import and export contact files	7
1.4.3	Lotus Sametime Contacts	7
1.5	Security	7
1.5.1	Help if you forget your password	7
1.5.2	Option to eliminate Notes password prompts	7
1.6	Other features	8
1.6.1	Notes applications	8
1.6.2	Activities	8
1.6.3	Lotus Connections integration	8
2	What's new in Lotus Domino 8.5 server	10
2.1	Domino Attachment and Object Service (DAOS)	10
2.2	Document compression	12
2.2.1	Actual results after enabling document compression	13
2.3	Security features	14
2.3.1	Notes ID vault	14
2.3.2	Notes shared log-in	14
2.4	Disk I/O reduction	15
2.5	Lotus iNotes Dynamic policy assignment	15
2.6	Auto-populated groups	16
2.7	Router optimization	16
2.8	GNU zip (gzip) files	17
2.9	Domino Configuration Tuner	17
3	Lotus iNotes	20
3.1	What's new in full mode	20
3.2	What's new in lite mode	21
3.3	Introducing the new ultralite mode	21
3.4	Support for mail policy settings	22
4	Resources	22

1 What's new in the Lotus Notes 8.5 client

This section describes some of the many new functionalities in Notes Client 8.5. For further details on using these features, refer to the [IBM Lotus Domino and Notes information center](#).

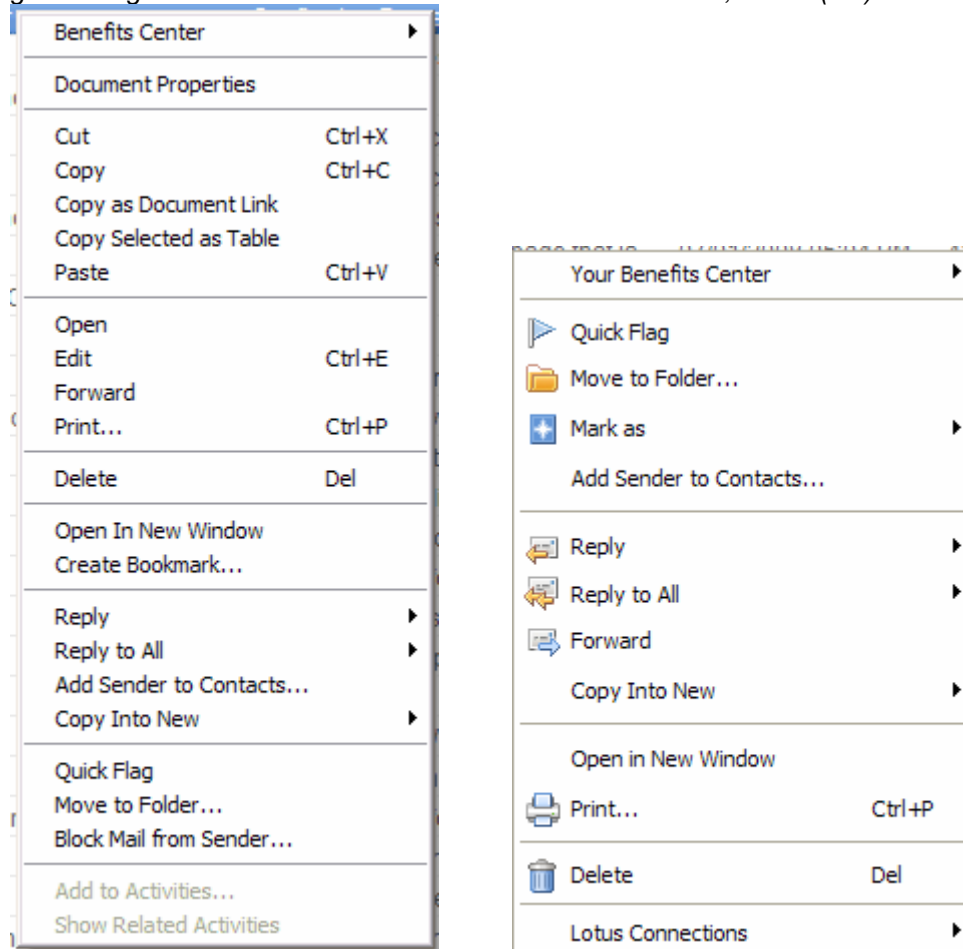
1.1 General

Some of the new general client features include the following:

1.1.1 Streamlined context menus

Context menus have been streamlined for mail, contacts, and To Do views. When you right-click documents in any of these views, you see a more concise menu with options relevant to the context (see figure 1). Additionally, you can right-click documents to mark them read or unread.

Figure 1. Right-click menus for an email from the same sender; v8.0.2 (left) and v8.5 (right)



1.1.2 Drag and drop in Notes documents

You can now drag and drop text, rich text, and names as outlined in table 1.

Table 1. Drag and drop scenarios

You can drag	and drop it into
Notes rich text from a rich text field in a Notes document	Another area within the same rich text field, a different rich text field in the same Notes document, or another document (currently supported on Microsoft® Windows® only)
A name from an external application	A names field in a Notes document
Rich text selection (as plain text or rich text)	External applications, Symphony editor
A name from embedded Lotus Sametime®	A names field
A Notes names field	Another names field
A Notes names field	A rich text field, or external application
A Notes text field	A Notes text field
An attachment	Another place in the same document (previously you could only drag to another document)

Also, note that double-clicking in a names field will select the whole name.

1.1.3 Compress inline images

Sending media through email has become common, but this ability has served to increase the size of mail files to the point where it can become a problem. You can now set a Basic Notes Client Configuration preference to automatically compress bitmap (.bmp) images that are pasted into documents, by selecting File > Preferences, Basic Notes Client Configuration, and under Additional options, enabling Compress images pasted into documents.

When you set this preference, bitmap images pasted into a Notes document are compressed and converted to a .gif format, reducing the space needed to store them.

1.2 Mail

The new features in mail are described below.

1.2.1 Type-ahead address options include multiple email addresses

Lotus Notes uses type-ahead to complete the names you type, displaying one or more names as soon as you type enough letters for a match. If you have included multiple email addresses in a person's contact entry, all the optional addresses display in a submenu in the type-ahead list as well. This allows you to send the email to your friend at their work or home address, whichever is most appropriate.

You can access the submenu of optional addresses in the type-ahead list by right-clicking a name and then selecting Other E-mail Addresses from the menu that appears. Or, if you hover your cursor over a name on the type-ahead list, a submenu opens that displays the list of optional addresses from which you can choose.

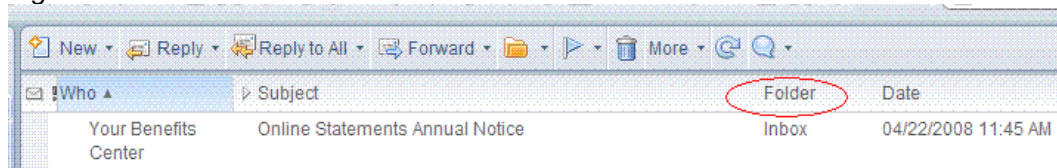
You can use the arrow keys to display the list of optional addresses also. Simply locate your cursor at the end of the name. Press the right-arrow key to navigate through the optional names list. Press the left-arrow key to return focus to the initial type-ahead list. Note that if your cursor is not at the end of a name, pressing the right-arrow key simply moves the cursor to the right by one character.

The more frequently used addresses display at the top of the list. Each time you select an optional address, this address is also reflected in your Recent Contacts view in your Contacts.

1.2.2 Folder column in mail All Documents view

A new Folder column in the mail All Documents view (see figure 2) displays any mail folders in which a document resides.

Figure 2. New Folder column



1.3 Calendar

Now you can add activities, private or public Google calendars, an iCalendar feed, another Notes user's calendar, or a Notes application's calendar (such as a Notes TeamRoom calendar).

1.3.1 Adding an iCalendar feed to your Notes calendar

iCalendar (iCal) is an Internet standard that allows calendars created in different calendar products to be imported into, and then viewed and managed in, other calendar products that use the iCal standard. The iCal standard also allows for sending and receiving meeting requests and other tasks via e-mail.

You can import an iCal calendar in Notes 8.5 by using the File > Import menu command, or by dragging and dropping a URL or file into your Notes Inbox or calendar. This can also be done through the Add Calendar option in the navigator; in the Show Calendars view, click Add a Calendar > iCalendar feed.

Selecting the option "View this calendar when offline or on a mobile device" adds the meetings from the iCal calendar to your Notes calendar (instead of overlaying them), so the calendar can be synchronized with mobile devices or used offline.

To see the iCal feed's entries on your Notes calendar, click the check box next to the feed label under Show Calendars. (Note that if there are many iCal feed entries, it may take a little longer for your Notes calendar to display them.) You can toggle the display of the iCal feed entries by selecting or deselecting the feed's check box.

1.3.2 Adding Notes TeamRoom calendar entries to your Notes calendar

To add Notes TeamRoom calendar entries to your Notes calendar, first make sure you are using the Mail85 template. Then, in the Views panel of the calendar navigator, click My Calendars, click Add a Calendar, and select Notes TeamRoom Calendar. To display or hide the added calendar's entries, select or deselect the check box beside the calendar's name under My Calendars.

To see the team calendar's entries on your Notes calendar, click the check box next to the TeamRoom calendar's title under My Calendars. (Note that if there are many entries on the team calendar, it may take a little longer for your Notes calendar to display them.) You can toggle the display of the team calendar (and any other calendars you add) by selecting or deselecting the calendar's check box.

Changes to apply to previous Notes TeamRoom applications. Many current Lotus Notes customers have existing TeamRoom applications. For this feature to work with a previous Notes TeamRoom application, an administrator must first make changes to attributes such as *STARTDATE*\$, *DURATION*\$, *EVENTTYPE*\$ in the TeamRoom's application template. See the Online Help for more details.

1.3.3 Adding a public Google calendar's entries to your Notes calendar

The Web 2.0 age has produced a constituency that's accustomed to using the same level of technology at home as it does in the office. It's now commonplace for people to keep a personal calendar on the Internet to track and share personal commitments.

Now you can add both public and private Google calendars to your Notes calendar, which helps you track *all* the demands on your time in one place and better manage your schedule.

To see the Google calendar's entries on your Notes calendar, click the check box next to the calendar's label under My Calendars. (Note that if there are many Google calendar entries, it may take a little longer for your Notes calendar to display them.) You can toggle the display of the Google calendar entries by selecting or deselecting the calendar's check box.

In this same way, you can also add another Notes user's calendar or an Activity to your Notes calendar.

1.3.4 Horizontal scroll bar for calendar views

When all the header information for calendar entries cannot be displayed completely on one day in a calendar view, the day now displays a horizontal scroll bar. You can use a mouse or the keyboard's left- and right-arrow keys to scroll with the bar and display the rest of the header information for calendar entries.

The horizontal scroll bar displays for both high-contrast and non-high-contrast users as well as for users who use different font sizes or a different set of colors in their themes (as applicable to each user's display). The horizontal scroll bar is also available through Microsoft Active Accessibility (MSAA) for those who use an assistive technology such as a screen reader.

1.4 Contacts

New Contacts features include the following:

1.4.1 Forward contacts as a vCard

To forward one or more contacts in a vCard file, from Contacts select the contacts you want to forward as a vCard and click Forward vCard.

TIP: The Forward vCard action is also available from the right-click menu and from the Actions menu.

1.4.2 Import and export contact files

Our contacts for work and life are spread out among many applications and places. You can now import contact information from these places into your Lotus Notes Contacts, consolidating them in the place where you work most. When you import from another source, however, the data in some of the fields may not map exactly to the same fields in the Notes contact records.

In that case, you can preview the contacts before you import them, and you can remap any fields so that the information is located where you want it in your new contact record. Information that does not map to any field in the Notes contact record is stored on the Unmapped Data tab in the new contact record, and you can preview that information as well.

To import external contacts to your Notes contacts, from Contacts, select File > Import Contacts. If field remapping is required, it can be done first or in Contacts after the import.

To export contacts (and now filter which contacts and fields to export), from Contacts, click File > Export > Contacts.

1.4.3 Lotus Sametime Contacts

You can drag messages to add names to your Sametime Contacts list. Moreover, you can drag a mail message to any personal group in your Sametime Contacts list and add all the members of the group to your list at one time. This can also be done with calendar and To Do entries that have recipients (such as meetings and group To Do assignments) and with Contacts entries.

1.5 Security

1.5.1 Help if you forget your password

If your administrator sets up a policy for you that stores a copy of your ID in a vault database on a server, you will see a Forgotten Password button in the Notes log-in window. If you forget your password, you can click the button to see instructions from your administrator describing how to get a new one.

1.5.2 Option to eliminate Notes password prompts

Your administrator may enable you to log in to Lotus Notes by using your operating system log-in (Notes shared log-in). In this case, you can start Lotus Notes without providing a Notes password; all you need to do is log in to Microsoft Windows using your Windows password.

This feature is an improvement over the Client Single Log-on feature available previously because no synchronization of the Windows and Notes passwords is done. Your administrator may require you to use this feature, or give you the option to use it.

To enable it yourself, if your administrator allows you to, click File > Security > User Security and select Login to Notes using your operating system log-in.

1.6 Other features

Other features in Lotus Notes 8.5 include enhancements to the following areas:

1.6.1 Notes applications

The Personal Journal template has a new name and new look. For more information, see the About this Application and Using this Application documents available from the Notebook application Help menu.

1.6.2 Activities

Overview view. Now displays a list of the recent updates made to your activities.

View Activities to-do items in Calendar. From the navigation pane, expand My Calendars, click Add a Calendar, and then choose Activities.

Add custom fields to entries. Click “Add custom fields when creating an entry” to add a text, date, or name field to an entry.

Edit field labels. Click the label of a file attachment, bookmark, or custom field to change its name.

Add multiple fields. Add multiple file attachments, bookmarks, or custom fields to a single entry.

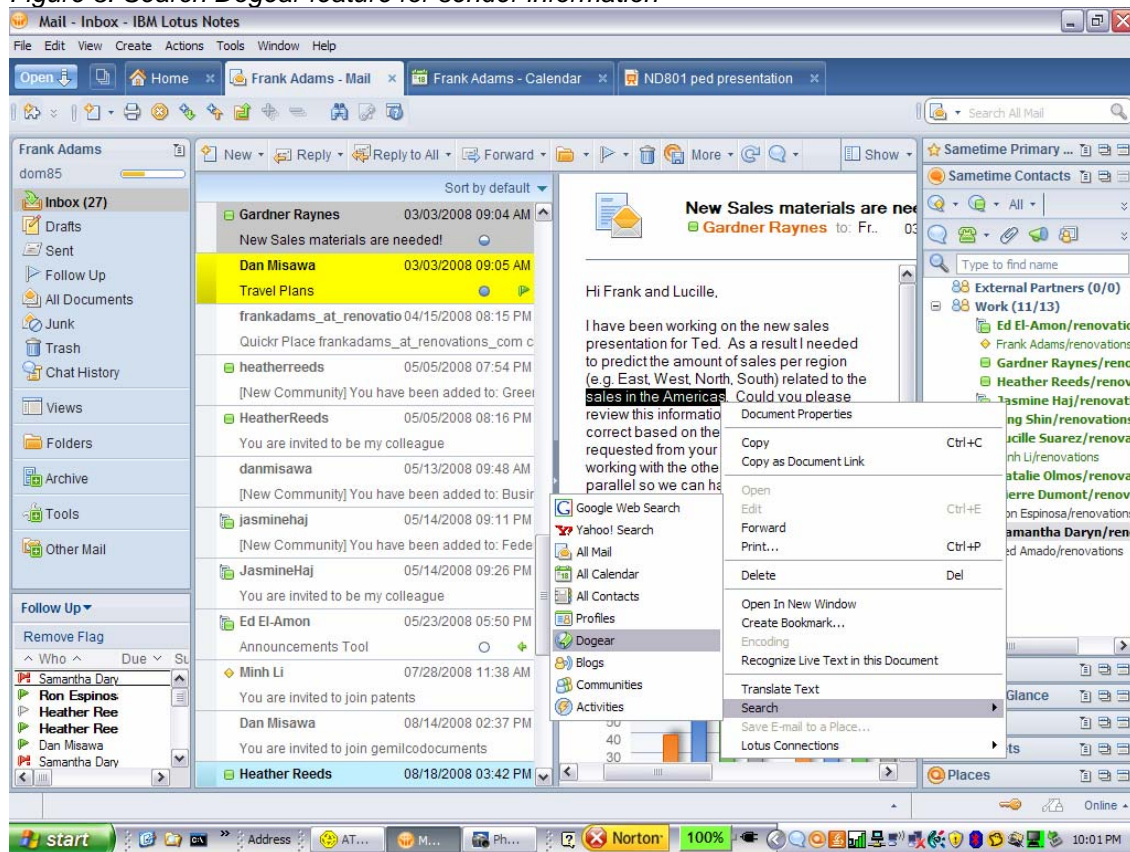
1.6.3 Lotus Connections integration

Lotus Connections is social networking software for the workplace. When integrated in Lotus Notes, it allows you to search Activities and other Connections features for a name, word, or phrase that you specify. You can use Lotus Connections to create and share activities, blogs, communities, bookmarks, and business cards.

You must have Activities installed and enabled in the Notes sidebar before you can search Lotus Connections.

You can search Lotus Connections in the Search field by selecting one of the Connections features from the options in the drop-down menu. If you right-click on a mail message in the Notes Inbox, you can search Connections features for information about the sender (see figure 3). The search results are displayed in a new page that opens in the client window.

Figure 3. Search Dogear feature for sender information



2 What's new in Lotus Domino 8.5 server

The following topics describe the new features of the Lotus Domino 8.5 server and where you can find more information about them. Significant additions and improvements have been made to reduce costs and bolster Green computing capabilities through reduced storage, I/O, and CPU use, ease of administration, and improved Quality of Service (QoS).

Here we discuss some of the most important features. For the full descriptions and details on all the features, refer to the [Information Center](#).

2.1 Domino Attachment and Object Service (DAOS)

DAOS lets you save significant space at the file level by sharing data identified as identical between databases (applications) on the same server. Document attachments are the first components to use the DAOS feature in Lotus Domino. The use of DAOS for attachments is called "attachment consolidation."

In databases that use DAOS, Lotus Domino no longer saves a separate and complete copy of every document attachment. Instead, the server saves a reference to each attached file in an internal repository and refers to the same file from multiple documents in one or more databases on the same server.

In the past, when a message containing a large attached file was broadcast to thousands of users, a separate copy of the message for each recipient was created, often requiring several gigabytes of disk space. With DAOS enabled, however, those gigabytes are substantially reduced.

Moreover, attachment consolidation is not limited to mail—it occurs as soon as an attachment is saved in any document of any database on the server on which the feature is enabled.

As an example of the savings, if a group of 12 people on the same mail server receive an attachment of 5 MB, only 5 MB will be written to disk, a disk space savings of 92%.

Administrators can use other settings on the DAOS tab to specify the minimum size that an attachment must be before being consolidated, and to specify the parent directory on the server for the repository.

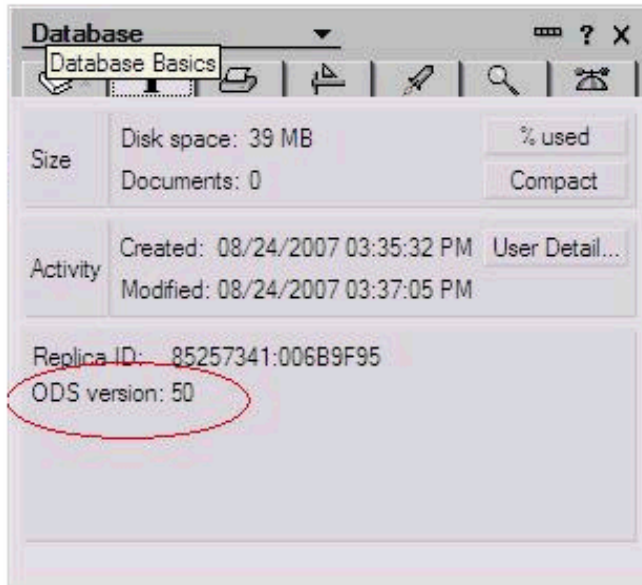
Attachment consolidation is completely transparent to users and API programs. When a recipient opens a document, the attachment icons appear the same, regardless of whether the document's database is on a server on which consolidation is enabled. Users can delete, save locally, replace, and perform any other familiar tasks with attachments.

If you delete or replace an attachment, or create new documents or messages containing copies of existing attachments, the server adjusts references to each attachment in the repository as necessary, using mapping to determine which attachments across the server are identical.

A common case in which this can provide immediate benefit is when “Reply to All with History” is used and attachments are (re)sent to the same list of email recipients.

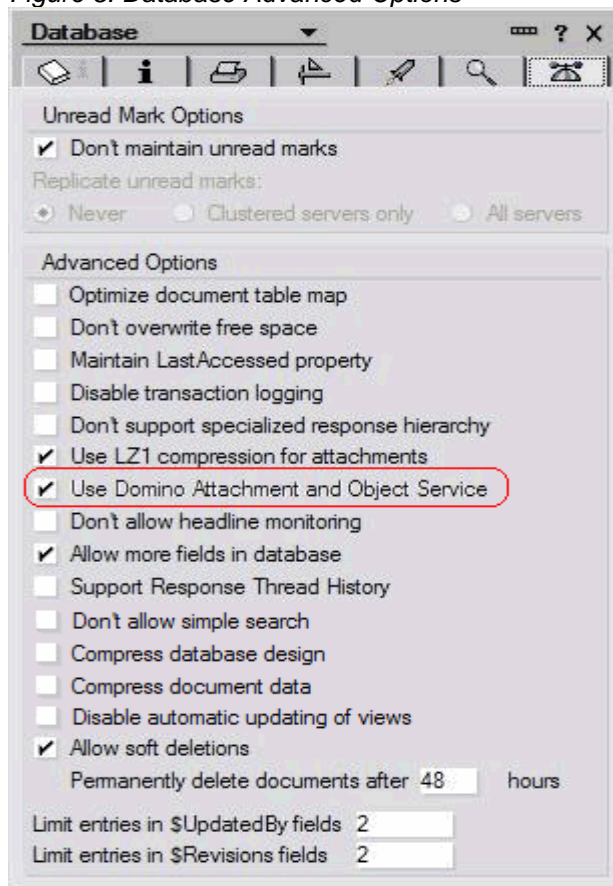
Consolidation works for all databases that are ODS 50 and above (see figure 4). Databases with an earlier ODS do not include the DAOS setting in Advanced Properties, but you can pre-enable them for consolidation in the Administrator client so that they’ll be included in consolidation when later upgraded to ODS 51 (which is the new ODS version available in Lotus Domino 8.5).

Figure 4. Database Basics tab showing ODS



The option for enabling DAOS is on the “beanie” tab, under Advanced Options (see figure 5).

Figure 5. Database Advanced Options



For more information on enabling DAOS for the first time or upgrading if it's already deployed, refer to the online Help for detailed steps.

2.2 Document compression

Document compression refers to the compression of non-summary (body) data in Notes documents, and previously this type of compression was available only for a database's design. Now, compressing non-summary data significantly reduces the size on disk of all rich text elements in documents, especially when a database contains lengthy documents that include large graphic images.

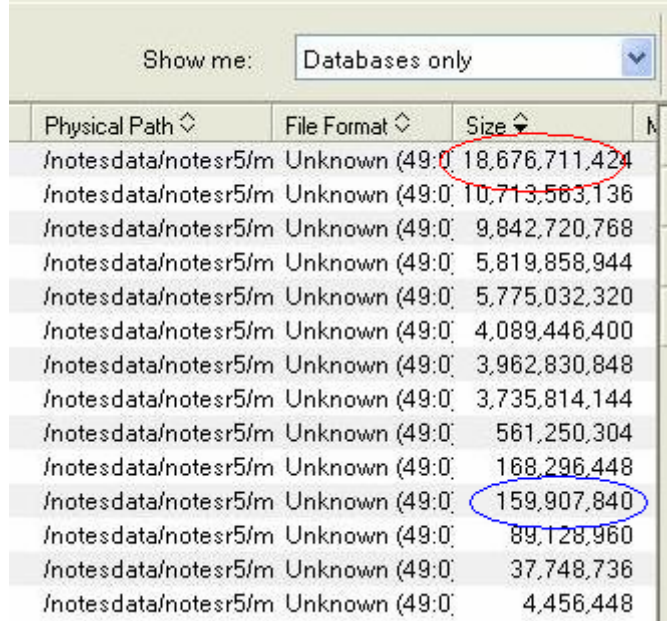
Overall, the I/O and disk savings have proven to be quite high. In fact, disk space savings resulting from document compression and DAOS combined have averaged between 40 and 60%!

See the online Help for the specific steps to enable document compression.

2.2.1 Actual results after enabling document compression

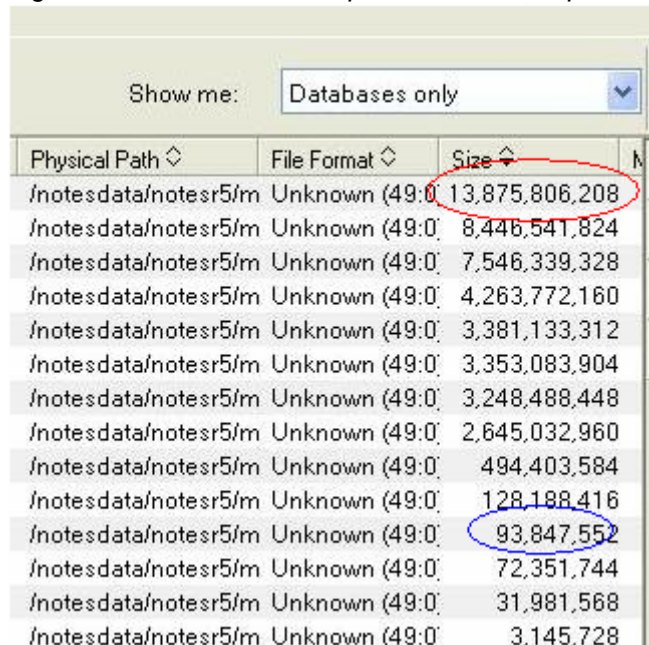
After enabling document compression on an internal development server, we found that all our databases benefited somewhat; however, a comparison of the circled values for the databases shown in figures 6 and 7 show significant gains. Early internal testing shows an average of about 20% reduction in overall database size.

Figure 6. Database size comparisons before compression



Physical Path	File Format	Size	N
/notesdata/notesr5/m	Unknown (49:0)	18,676,711,424	
/notesdata/notesr5/m	Unknown (49:0)	10,713,563,136	
/notesdata/notesr5/m	Unknown (49:0)	9,842,720,768	
/notesdata/notesr5/m	Unknown (49:0)	5,819,858,944	
/notesdata/notesr5/m	Unknown (49:0)	5,775,032,320	
/notesdata/notesr5/m	Unknown (49:0)	4,089,446,400	
/notesdata/notesr5/m	Unknown (49:0)	3,962,830,848	
/notesdata/notesr5/m	Unknown (49:0)	3,735,814,144	
/notesdata/notesr5/m	Unknown (49:0)	561,250,304	
/notesdata/notesr5/m	Unknown (49:0)	168,296,448	
/notesdata/notesr5/m	Unknown (49:0)	159,907,840	
/notesdata/notesr5/m	Unknown (49:0)	89,128,960	
/notesdata/notesr5/m	Unknown (49:0)	37,748,736	
/notesdata/notesr5/m	Unknown (49:0)	4,456,448	

Figure 7. Database size comparisons after compression



Physical Path	File Format	Size	N
/notesdata/notesr5/m	Unknown (49:0)	13,875,806,208	
/notesdata/notesr5/m	Unknown (49:0)	8,446,541,824	
/notesdata/notesr5/m	Unknown (49:0)	7,546,339,328	
/notesdata/notesr5/m	Unknown (49:0)	4,263,772,160	
/notesdata/notesr5/m	Unknown (49:0)	3,381,133,312	
/notesdata/notesr5/m	Unknown (49:0)	3,353,083,904	
/notesdata/notesr5/m	Unknown (49:0)	3,248,488,448	
/notesdata/notesr5/m	Unknown (49:0)	2,645,032,960	
/notesdata/notesr5/m	Unknown (49:0)	494,403,584	
/notesdata/notesr5/m	Unknown (49:0)	128,188,416	
/notesdata/notesr5/m	Unknown (49:0)	93,847,552	
/notesdata/notesr5/m	Unknown (49:0)	72,351,744	
/notesdata/notesr5/m	Unknown (49:0)	31,981,568	
/notesdata/notesr5/m	Unknown (49:0)	3,145,728	

2.3 Security features

Let's discuss some of the new Domino 8.5 security features.

2.3.1 Notes ID vault

Now you can eliminate the lost productivity that can occur with lost IDs or forgotten passwords. The Notes ID vault is an optional, server-based database that holds protected copies of Notes user IDs. It allows administrators and users to easily manage their user IDs and is more convenient than the current quorum-based Domino ID file-recovery mechanism.

Using this feature, you can assign a user to a vault via a policy and recover a forgotten password. In addition, a password re-setter can generate a password and send it to someone via email. ID Vault also contains audit capabilities to track requests/access to the database.

For complete instructions on the new features and the steps to access them, refer to the information center [“Notes ID vault”](#) topic and its subtopics.

2.3.2 Notes shared log-in

Notes shared log-in allows users to start Lotus Notes and use their Notes IDs without having to provide Notes passwords. Instead, they only need to log in to Microsoft Windows using their Windows passwords, though the security aspects of Notes are still controlled through the Notes ID.

Notes shared log-in provides the following benefits:

- Users need to remember only their Windows passwords.
- Notes shared log-in works without interruption when Windows passwords change.
- Administrators use policies to control who uses the feature and whether its use is required or optional.

What's new for this feature:

- The settings that administrators use to enable and disable shared log-in have been modified for improved usability.
- If a user has shared log-in enabled and is required by policy to disable it, they are prompted for their Windows password before being allowed to specify a new password for their Notes ID.

Enabling an ID for Notes shared log-in alters it so that the ID works only on the computer on which the feature is activated. This is a requirement because the feature relies on a Windows security infrastructure specific to that computer.

Notes shared log-in is not supported for Notes IDs that are:

- used on computers that don't run Microsoft Windows
- protected by Smartcards
- protected by multiple passwords
- used by roaming users whose Notes IDs are stored in the Domino Directory
- used with Notes on a USB drive
- used by people who have Windows mandatory profiles
- used in a Citrix environment

To learn more about how to enable, use, and disable this feature, refer to the information center topic, [Using Notes shared login to suppress password prompts](#), and the related subtopics.

2.4 Disk I/O reduction

One of the primary performance goals for Lotus Domino is to reduce the total cost of the disk infrastructure needed. In addition to reducing the total volume of disk space needed via features such as DAOS and document compression, we also aim to reduce the number of Disk I/O operations per second, along with the volume of data being read from and written to disk.

These Disk I/O optimizations reduce the number of unique disk drives (spindles) needed to sustain the same Domino server load. The Disk I/O reductions come from many improvements to Lotus Domino, both in the processing performed in response to user actions (sending and reading email, for example) as well various background activities and maintenance operations performed on the server.

In addition to the natural reduction in Disk I/O operations as a result of DAOS and document compression, improvements in the processing of the Schedule Manager task and the Rooms and Resource Manager task significantly improve their performance under normal operations. Also, these tasks now impose a significantly lighter load on the Domino server during startup, and overnight during daily housekeeping processing.

2.5 Lotus iNotes Dynamic policy assignment

A dynamic policy is an explicit policy that is created via the Policy Assignment tab on the Policy document to assign the policy to users and groups.

Dynamic policy assignment is a new option for assigning explicit policies. It is on by default and lets you assign policy settings to individual users and user groups simply by specifying the appropriate user or group name in a Policy document.

You can “set it and forget it” as far as the policy assignment goes. As the organization changes, you need only to update the Group document. If a user changes jobs or organizations, you do not need to determine which policies need updating; the updated group information is applied the next time the effective policy is calculated for any users in that group.

Dynamic policy assignment can be used only with explicit policies, which assign default settings to individual users or user groups. For example, to set a six-month certification

period for contract workers in all departments, create an explicit policy and then assign it to the group that includes all contract employees or to each contract employee individually.

Using dynamic group policy assignment, you can assign policies:

- to groups of users, and have their effective policy settings dynamically update as their group membership changes.
- to users based on their home server, and have their effective policy settings dynamically update as their home server changes.
- to users by adding their name directly to the policy, eliminating the need to edit hundreds of Person documents.
- on the Policy Assignment tab on the Explicit Policy document, during user registration, by editing the user's Person document or by using the Assign Policy tool in the Domino Administrator client.

Note that dynamically assigned policies can be used with your existing explicit and organization policies.

The Policy Synopsis tool has been enhanced to list any dynamic policies that were included in determining a user's effective policy. You access and use the Policy Synopsis tool as you did in previous Domino releases.

See the Information Center topic, [Policies – New features](#), and the related subtopics for more information on using this feature.

2.6 Auto-populated groups

Grouping together individuals based on their home mail server is a common practice for administrators. This feature uses predefined criteria to automatically determine and update group membership. You can use this feature to:

- apply policies to users and groups based on their home servers
- create a group for individuals based on their home mail server
- assign a policy to that group

When you assign a policy to that group, the policy applies to everyone in the home server group. Any updates to the home server's group membership automatically affect the users to which the policy is applied. This feature greatly reduces the work required to keep groups updated.

To set up an auto-populated home server group, first set up a Home Server auto-populated group in a Group document, and then specify the update interval for auto-populated groups in the Domino Directory Profile document.

2.7 Router optimization

Router optimization is a series of enhancements and changes to the Domino mail router designed and implemented to reduce latency; that is, to reduce the time interval between

when a message is sent and when it is delivered. It is intended to contribute to reduced I/O and to address scalability issues caused by large message backlogs.

This feature is turned on by default. The enhancements do not cause changes to the UI, but they are noticeable as performance improvements, new messaging statistics, and new router task detail.

Refer to the information center topic, [Messaging – new features](#), and its subtopics for more details, including using the Show Tasks command to view router activity and viewing new messaging statistics by using Show Stat Mail.

2.8 GNU zip (gzip) files

The Domino Web server can serve files compressed by gzip (GNU zip). This feature is on by default, but you must add the compressed file to the appropriate server directory, and certain restrictions apply, as listed below.

The Domino Web Server serves files compressed by gzip (GNU zip), under the following conditions:

- The Notes.ini file does not contain the following setting:
HTTPDisablePreCompressedGzipFiles=1.
- The name of the compressed file is the name of the original file with an additional extension of .gz. For example, the gzip counterpart of c:\notes\data\domino\html\foo.html is c:\notes\data\domino\html\foo.html.gz. (A browser sees this file as http://servername/foo.html.)
- The original file is present in the same directory as the gzip file. The original file is served if it is newer than the gzip file or compression is disabled.
- The browser or other client sends the request header Accept-Encoding: gzip (the default for most browsers).
- The MIME Content-type of the file matches text/* (all subtypes of type text) or application/* (all subtypes of type application). The server does not support sending a range of bytes for a file that has a gzip counterpart. The server does not send "Accept-Ranges: bytes" in the HTTP header and sends the entire compressed file.

2.9 Domino Configuration Tuner

The Domino Configuration Tuner (DCT) is an application that evaluates Domino server settings according to a growing catalog of best practices. All servers in a single domain can be evaluated together. DCT generates reports that explain the issues it uncovers, suggest mitigations, and provide references to supporting publications.

DCT is implemented as a template, DCT.NTF, which is included with the Domino Administrator client install.

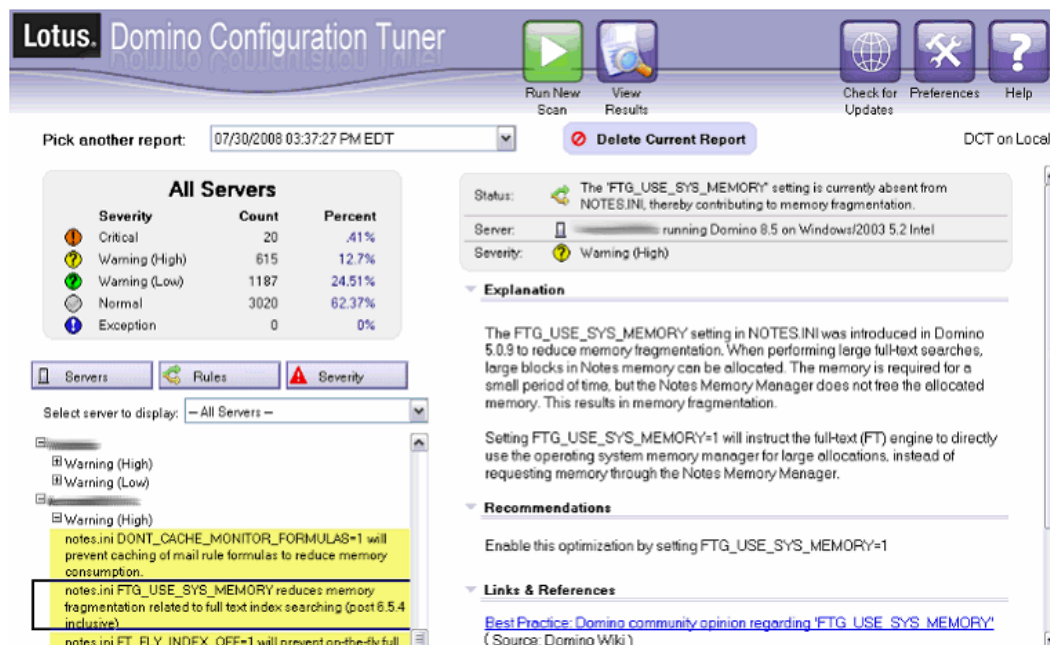
DCT is intended to provide customers with easy-to-use, self-service configuration analysis so that their installations are more robust and yield better performance. A single

Domino server includes thousands of configuration options. DCT provides best practice analysis as well as worst practice disclosure. It is expected that DCT will help reduce total cost of ownership by assisting in the identification of existing configuration problems.

How it works. The first revision of DCT looks at settings in Server documents, the Notes.ini file, and database advanced properties. Configuration settings are flagged when their values are known to cause problems based on prior customer experience. Out-of-range and unexpected values are reported so that undefined behavior can be prevented. Suggested adjustments help administrators achieve known server performance improvements.

A scan of many servers generated the report shown in figure 8. Individual entries in the report can be selected at the bottom left-hand portion of the page, sorted by server, rule, or severity. The right-hand side displays details for the selected server. Notice that links to online references provide comprehensive context about the configuration option.

Figure 8. DCT scan report



Availability and requirements. DCT ships simultaneously with Domino 8.5 and will continue to be included with the Domino Administrator. It will also be available outside the Domino release cycle to any customer, free of charge. See the [Lotus Notes and Domino Wiki](#) for more information about how to obtain DCT.

DCT is designed to evaluate Domino 7.0 and later servers. There are no changes required to a customer domain configuration in order to take advantage of DCT. Because DCT is a template, it runs on the Notes client, Standard or Basic, version 8 and later.

Getting started with DCT. Using the Domino 8.5 Administrator, navigate to the Server/Analysis tab and select "Domino Configuration Tuner" from the left-hand navigation pane. A local version of DCT.NSF is automatically created and then opened. Click the Run New Scan button to begin.

DCT vs. DDM. [Domino Domain Monitoring](#) (DDM) is a runtime server feature that is used for detecting, understanding, and acting on runtime issues. DCT, on the other hand, is a client-based static analysis tool.

Unlike DDM, improvements to DCT are available to any customer free of charge and are periodically posted to the Internet for download (very much like virus detection definitions).

DCT works with Domino 7.0 and later. The catalog of best practices understands configuration behavioral differences between versions of Lotus Domino and tailors the generated reports accordingly. Unlike with DDM, no changes to a customer domain configuration are necessary to take advantage of DCT evaluation.

3 Lotus iNotes

There are many new features in Lotus iNotes, including:

- A new framework for full mode that includes a new look and new features
- Addition of calendar options in lite mode
- Ultralite, a new mode for Apple iPhone or iPod touch
- Support for administrative mail policies
- Integration of external services (widgets)
- Mail quota support for lite mode
- Opening a document in a new window (full mode only)
- Support for mail quotas in lite mode
- In lite mode, users can respond to an invitation from the Inbox or an open invitation, using "Accept with Comments" or "Decline with Comments."

To view the newest Lotus iNotes features, you must (1) have a Domino 8.5 server installed, (2) be registered using the Lotus iNotes mail system, and (3) be using the Mail8.5 mail template.

3.1 *What's new in full mode*

Lotus iNotes full mode offers a new tabbed framework for documents and views. This new framework has the look and feel of the lite mode that was introduced in Domino 8.0.1, providing more parity with the Notes client and greater efficiency. Refer to the developerWorks article, "[Introducing IBM Lotus Domino 8.0.1 Web Access Lite mode](#)," for more background information.

This new framework supports the following new features:

- **Opening a document in a new window.** When you are reading a message, you can "tear off" the message into a new window by clicking an icon in the document Action bar.
- **Switcher icons.** Located at the top of the left-hand navigation panel. You can simply click an icon to open an application.
- **Sidebar.** This Notes-style sidebar displays a Day-at-a-glance calendar and the Help. To open or close the sidebar, click the sidebar icon.
- **Day-at-a-glance.** The Day-at-a-glance calendar displays your calendar entries in the sidebar.
- **Loading status.** When documents are opened, tabs display a status icon indicating that a document is loading.
- **Calendar views.** Views that include time slots have been updated. There is a new look for the 1-day, 2-day, 5-day, 1-week, and 1-month views.

Console logging. If something goes wrong, an error message displays in the status bar notifying the user of a problem and presenting an easy way to view the console, if desired. If another type of error occurs, users can press CTRL and click the Lotus iNotes logo to open the support console. Information displayed in the support console can help developers investigate the problem.

3.2 What's new in lite mode

- Users can view their mail quota information.
- From the Inbox or an open meeting invitation, users can accept with comments, or decline with comments.
- Users can now accept or decline meeting invitations in lite mode and can also create meetings.

3.3 Introducing the new ultralite mode

The newest mode of the Lotus iNotes mail client is the ultralite mode. It is designed for use on a mobile device and is initially supported on the Apple iPhone or iPod touch. It provides limited mail and contacts capability, along with a Day-at-a-glance calendar.

With one touch, Lotus iNotes users can view their Inbox, Contacts, or Day-at-a-glance calendar. As with other modes of Lotus iNotes, the ultralite mode includes the Active Content Filter to reduce the risk of encountering dangerous script in HTML.

This mode is supported on the Apple Safari 3.0 browser, using any of the following:

- Apple iPhone or Apple iPod touch
- Apple Safari 3.0 browser on Macintosh (preferred) or Windows operating systems
- Alternate client: Mozilla Firefox browser on Macintosh or Windows

Table 2 lists the features supported for ultralite mode in Lotus Domino 8.5.

Table 2. Supported Lotus iNotes features

Mail	Select Inbox to view your Lotus iNotes Inbox. You can open and reply to messages. You can also compose and send new messages using plain text. When addressing messages to more than one user, use a semicolon (;) to separate names; for example, John Doe@Acme.com, Samantha Daryn@Renovations.com. Touch (click, on a Macintosh) the refresh icon to refresh your Inbox view.
Contacts	Select Contacts to view a list of your Lotus iNotes contacts alphabetically by name, along with the primary phone and email address. On the iPhone or iPod touch, touch the phone number to dial. Select an email address to create a new message.
Calendar	Select Calendar to view your calendar entries for a day. Notes users, if you assign colors to different event types in your Notes calendar preferences, those colors are reflected here. Touch (click, on a Macintosh) the refresh icon to refresh your calendar view.
Navigation	Wherever you see the double arrows (either << or >>) on an iPhone or iPod touch, you can touch them (click, if viewing on a Macintosh) to move forward to the next list, document, or calendar date. Here are some of the ways in which you can use these arrows: <ul style="list-style-type: none">• Move through pages in your Inbox• In open mail, navigate to the next or previous message without returning to the Inbox• Move the Day-at-a-glance calendar date
Refresh	You can refresh your Inbox and Calendar view.

3.4 Support for mail policy settings

Domino administrators can use administrative policies to set or to enforce mail settings for Lotus iNotes users. When applied to a user, these mail settings lock down the associated user preferences in Lotus iNotes. (Note that any existing policies previously assigned to Lotus iNotes users will be enforced.)

For information on creating a Mail Policy Settings document, and for a full explanation about using policies and the relationship between Policy documents and Policy Settings documents, refer to the "User and Server Configuration > Policies" section of the Domino Administrator Help.

Also, the information center topic, "[Creating mail policy settings for Lotus iNotes users](#)," lists the settings in the Mail Settings document of the Domino Administrator client that are supported in Lotus iNotes.

4 Resources

- Refer to the [IBM Lotus Domino and Notes information center](#)
- Refer to the [Lotus Notes and Domino Wiki](#)
- Read the developerWorks Lotus article, "[IBM Lotus Domino going green: The new Lotus Domino attachment and object service](#)"
- Refer to the [IBM Lotus Notes and Domino product page](#).
- Participate in the [Notes/Domino 8 Forum](#).
- Download a beta version of Lotus Notes and Lotus Domino 8.5 from the developerWorks Downloads page: [Trial: Lotus Notes, Domino Designer, and Domino Administrator clients](#)

Trademarks

Domino, IBM, Lotus, Notes, and Sametime, trademarks or registered trademarks of IBM Corporation in the United States, other countries, or both.

Microsoft and Windows are registered trademarks of Microsoft Corporation in the United States, other countries, or both.

Other company, product, and service names may be trademarks or service marks of others.